

Week 4:

Unit 2: Going Out



Outline

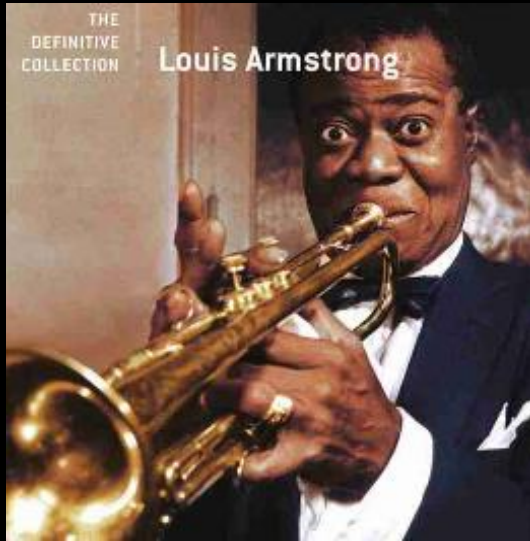
- ➡ Preview (page 14)
- ➡ Grammar: Preposition of Time and Place (page 16 and 125)
- ➡ TOEFL Vocabulary
- ➡ Quiz



Vocabulary



Vocabulary



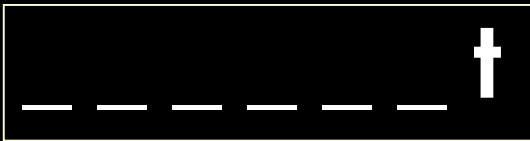
— — — z



c — — — — —



Vocabulary



Vocabulary

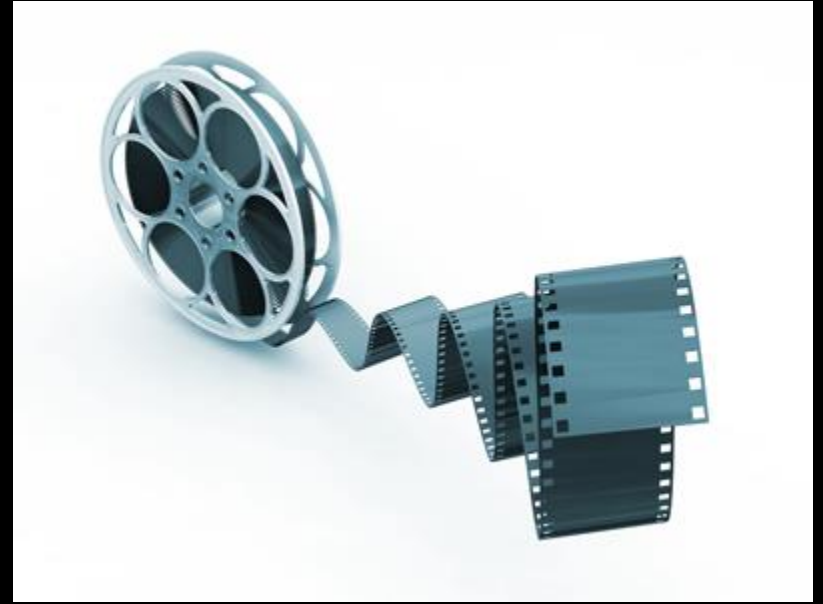
p _ _ _

(n.) a story that is written to be performed by actors, especially in a theatre



Vocabulary

(n.) *especially AmE* a film made to be shown at the cinema



m _ _ _ _ / _ _ _ _



Vocabulary

___ e _ _ _ _ _

(n.) a show of paintings, photographs, or other objects that people can go to see



Vocabulary



It's **a** _ _ _ _ _ from the park.



Vocabulary



It's around the _____r from
the theater.



Locations

Where is the _____ ?



It's **on the right side** of the street.



It's **across from** the park.



It's **down the street from** the museum.



It's **around the corner from** the theater.



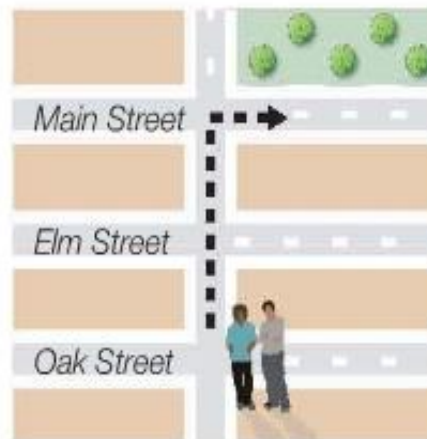
It's **between** Main (Street) **and** Mercer (Avenue).

Directions

How do I get to the _____ ?



Turn left at the corner / at the light / on King Street.



Go / Walk / Drive **two blocks** and **turn right**.



Go / Walk / Drive **to the corner of** Smith (Street) **and** Bond (Avenue).

Grammar



Prepositions of time

When's the concert? **What time's** the play? It's . . .

on

on Saturday
on June 7th
on Monday, May 3rd
on Tuesday morning

in

in March
in 2009
in the summer
in the morning
in ten minutes

at

at 8:30
at noon
at midnight

Contractions

When's = When is

What time's = What time is

Where's = Where is

Prepositions of place

Where's the play? It's . . .

on

on Fifth Avenue
on the corner
on the street
on the left

in

in Mexico
in Osaka
in the park
in the neighborhood

at

at the Film Forum
at work
at school
at the art gallery

GRAMMAR BOOSTER ▶ p. 125

- Prepositions of time and place: usage

Grammar: Preposition of Time and Place

Preposition of Time

1. Use on with the names of days or dates.

on Thursday

on New Year's Day

on Sundays

on Monday morning

on the weekend

on a weekday



Preposition of Time and Place

2. Use in with periods of time (but not with names of days).

in 2008

in July

in (the) spring

in an hour

in the morning

in the 20th century

in the 1950s

in two weeks



Preposition of Time and Place

3. Use at with specific moments in time.

at 9:00

at dawn

at noon

at sunrise

at dusk

at midnight



Preposition of Time and Place

Preposition of Place

1. Use on with the names of streets and specific physical locations.

on Main Street

on Smith Avenue

on the corner

on the street

on the right

on the left



Preposition of Time and Place

2. Use in with the names of cities, countries, continents, and other large locations.

in the neighborhood

in the center of town

in Lima

in Korea

in Africa

in the ocean



Preposition of Time and Place

3. Use at for buildings and addresses.

at the theater

at the supermarket

at the bank

at the train station

at 10 Main Street



From: jjlove@meltdown.net

To: bonnie@vmail.com

Subject: Salsa dance concert

Hi, Bonnie: Are you busy _____ Tuesday evening? There's a salsa dance concert right near your office _____ the Mellon Exhibit Space. Sounds like something really special with dancers from all over the world. It starts _____ 8:30. I'll be _____ work until 6:00, but I could meet you _____ 6:15 or 6:30 _____ the corner of Grand and Crane. We could have something to eat before the concert. What do you think? —JJ

A Complete the following sentences with on, in, or at.

- 1 When's the movie? The movie is _____ Friday _____ 8:30.
- 2 _____ the weekend, I'm going to the concert _____ the public library.
- 3 Where is he? He's not here right now. He's _____ work.
- 4 Where's his office? It's _____ the center of town.
- 5 When was her mother born? She was born _____ January 1.
- 6 When does the movie take place? It takes place _____ the 19th century _____ Africa.
- 7 The park opens _____ 6:00 _____ the morning and closes _____ dusk.
- 8 Is the concert hall _____ Grove Street?
- 9 I think the theater is _____ the right side of the street.
- 10 Let's go to the evening show. The concert is outside, and the weather is really hot _____ the afternoon.
- 11 This concert occurs every second year _____ November.
- 12 I'll see you _____ Thursday morning in front of the theater, OK?

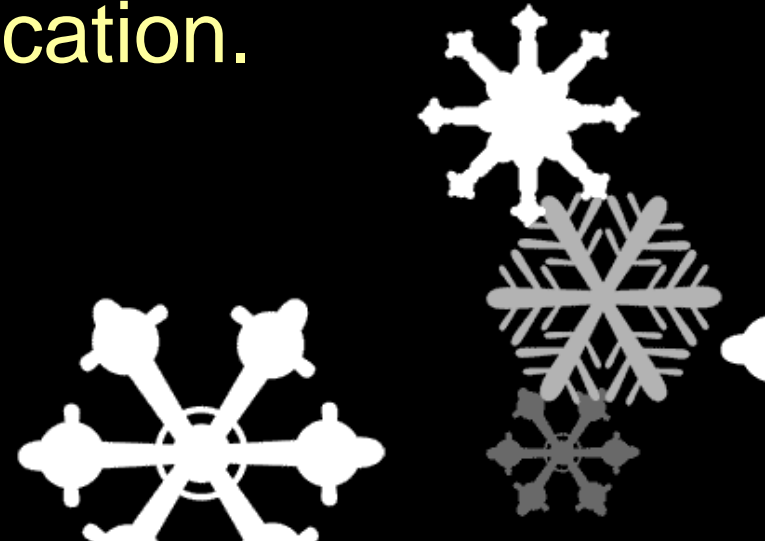
TOEFL Vocabulary

1. malfeasance (n.) illegal or dishonest activity (การผิดวินัยหรือผิดกฎหมาย)
2. frigid (adj.) not friendly or kind (ไม่เป็นมิตร)
3. thrifty (adj.) using money carefully and wisely (มัธยัสถ์)
4. repertoire (n.) all the plays, pieces of music etc. that a performer or group knows and can perform (เรื่องละครเก่า ๆ ที่มีไว้เพื่อแสดง)
5. exquisite (adj.) extremely beautiful and very delicately made (งดงาม, วิจิตร)



Reference

- Saslow, J & Ascher, A (2011). *Top Notch: English for Today's World 1*. 2nd ed.USA: Pearson Education.
- Saslow, J & Ascher, A (2011). *Top Notch: English for Today's World 1 (Workbook)*. 2nd ed.USA: Pearson Education.



Quiz

Choose the best answer.

1. Are you busy _____ Monday evening?

1. in

2. on

3. at

4. by

2. Go two _____ and _____ left.

1. side / from

2. corner / turn

3. blocks / turn

4. between / on



Quiz

3. “a show of paintings, photographs, or other objects that people can go to see”
What is it?

1. an art exhibit

2. a movie

3. a concert

4. a lecture



Quiz

4. A: _____ is the park?

B: It's _____ Green Avenue, _____ 6th
and 7th Street.

1. Where / on / on

2. When / on / on

3. Where / in / on

4. Where / on / between



Quiz

5. What does “jazz” mean?

1. a type of Latin American dance music
2. a type of music that has a strong beat and parts for performers to play alone
3. a type of popular modern music with a strong loud beat, played using guitars and drums
4. relating to music that is considered to be important and serious and that has a value that continues for a long time

